

MetaTrader Software Tutorial



Copyright © LearnForexPro.com

Website : <http://www.learnforexpro.com>

Email : support@learnforexpro.com

WARNING : You may not modify, copy, distribute, display, reproduce, publish, transfer, or sell any information, obtained from this E-Book without written permission from LearnForexPro.com

MetaTrader Forex Trading Platform

<http://www.learnforexpro.com> introduces **MetaTrader** trading platform that offers several advanced features designed to improve Forex Trading performance. Developed with high technology, this program has a simple, user friendly, and easy to use interface which allow traders to monitor their transactions conveniently, perform trading analysis using available indicators more effectively, and trade automatically with Expert Advisors (Robot) / Scripts.

MetaTrader platform is one of the best platform in the world, designed for professionals in Forex & CFD trading. Currently, more than 100 broker companies and banks around the world have chosen Meta Trader to accommodate and meet high-performance of business standards.

MetaTrader provides automated trading feature which can be programmed with Meta Quotes Language (MQL). By using this feature, you can create Expert Advisors, Custom Indicators, and Scripts. Expert Advisors (Forex Robots) can analyze market situation, make trading decisions including placing orders, pending orders, closing orders, and modifying orders without trader's participation.



Copyright of <http://www.learnforexpro.com>

METATRADER INSTALLATION GUIDE

→ After downloading MetaTrader trading software from your forex broker, double click on the setup file / icon



→ Choose desired language, click **Next**

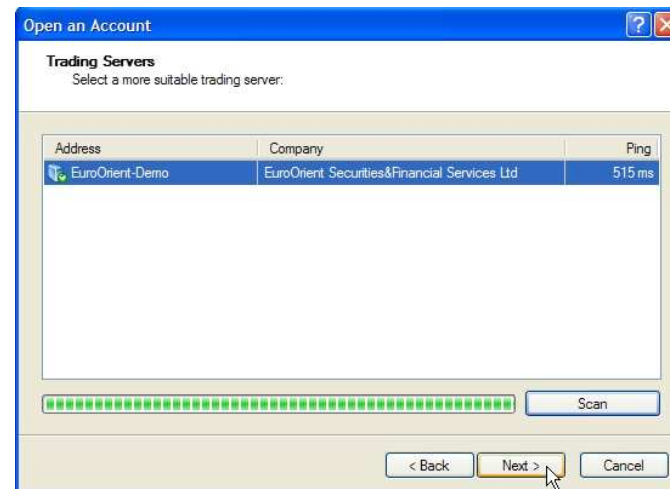
→ Tick at "Yes, I agree with all the terms of this license agreement" box, click **Next**



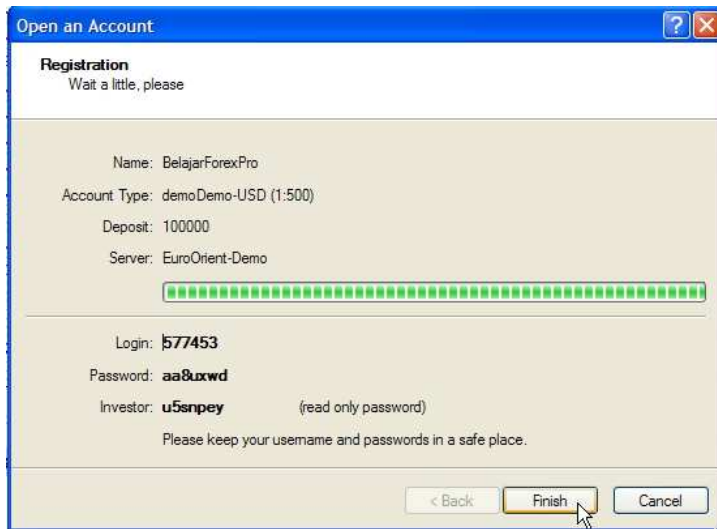
- You can leave MetaTrader installation folder as default, click **Next**
- Program Group doesn't need to be changed (leave it as default), click **Next**



- Fill in your personal details at the first MetaTrader installation or while opening demo accounts. Tick "I agree to subscribe to your newsletters" box, click **Next**
- Click **Next**. (For demo accounts, in case there are more than one servers, click "Scan" then choose a server with smallest ping, click **Next**)



→ MetaTrader will generate Login Number and Password (Demo accounts only). Click **Finish**



Investor is password used to login and view trading, without the privilege to trade or modifying orders. Investor password is useful to show trading performance to others. Please note : Login Number and Password generated above is only for **Demo Account**

→ After clicking Finish, MetaTrader Software will automatically login to Demo account has just been made

→ To make another Demo Account, please repeat this step :

Click on "File" Tab => "Open An Account" or Alt-F => A

LOGIN TO LIVE ACCOUNT

→ Suppose you already have Live Account details (Login Number and Password) and intend to login to live account, please follow this step :

Click on "File" Tab => "Login" or Alt-F => L



To login to your live account, fill in Login Number and Password to the fields as displayed on the left figure, then change the server to **Real Server**, click **Login**

MetaTrader Password consists of a combination of Capital letters, Small letters, and numeric. Please **Copy Paste** password to avoid mistakes while filling password.

METATRADER ICON FUNCTIONS

Open New Chart (New Chart)

Price Window / Market Watch (Ctrl-M) *

Demo Account (Account Real will not display "Demo Account" message)

Navigator Window (Ctrl-N) *

AutoScroll *

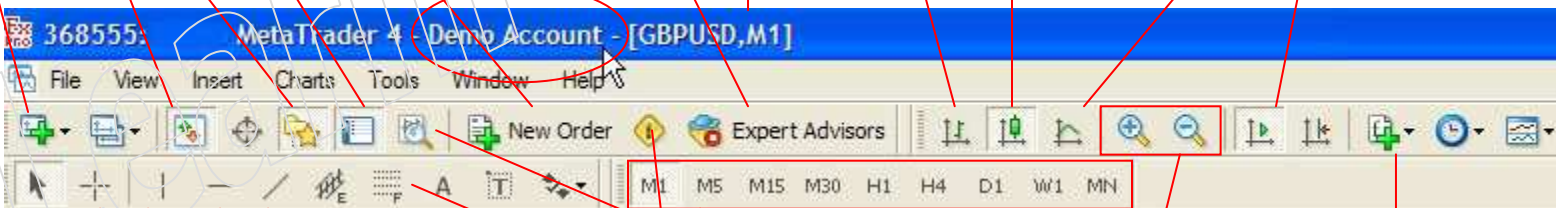
Terminal Window (Ctrl-T) *

GBP/USD 1 Minute

Open Order

EA Icon

Chart : Bar, Candlestick, Line



Price pointer

To make trend line

Time Frame

To make horizontal line

Strategy Tester

To make vertical line

Fibonacci Retracement

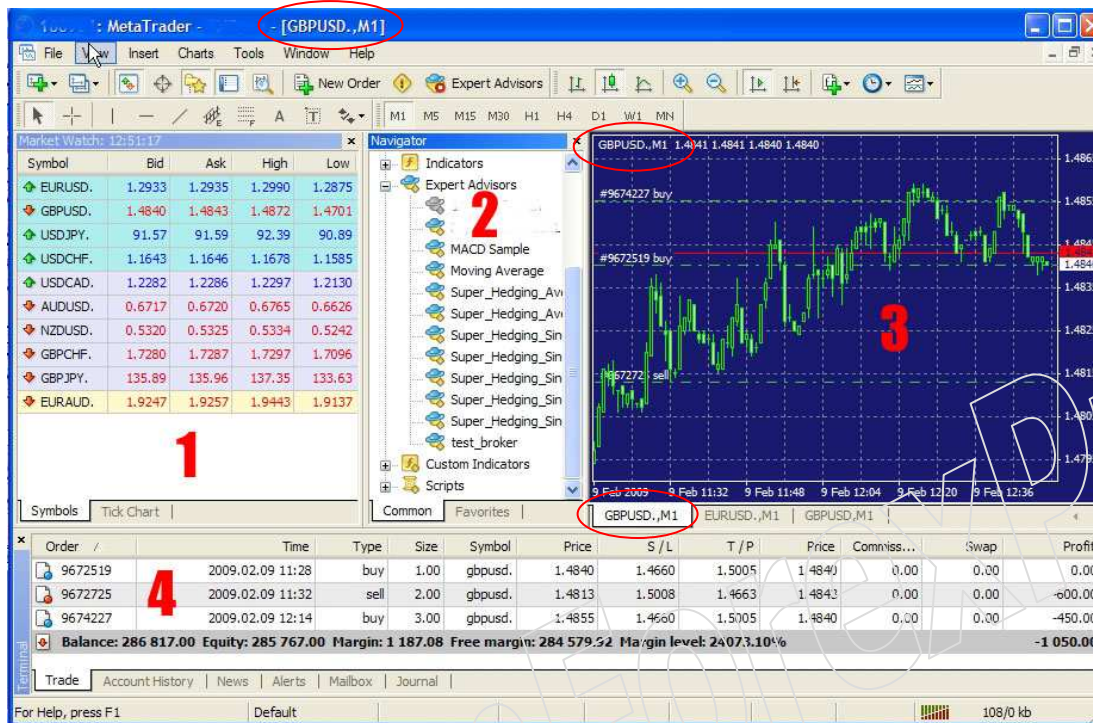
MetaEditor

Zoom In/Out

Indicators

* Important

METATRADER MAIN WINDOW



Window 1 : Market Watch (Ctrl-M)

To view current price (Bid / Ask), High Low prices (daily), and server time

Window 2 : Navigator (Ctrl-N)

To view the list of accounts (Demo & Live Accounts), Indicators, Expert Advisors, and Scripts

To login to an account which is displayed in the list, double click on desired account number.

To attach Expert Advisor or Script on the current pair / active chart, double click on the EA or script in the list.

Window 3 : Chart

You can open multiple Chart with different pairs and timeframes at the same time. (Click "File" Tab => "New Chart" or Click "Alt-F" => N). Example : [GBPUSD, M1] in the figure above, means active chart is GBP/USD Chart 1 minute Timeframe (at the upper left chart will show GBPUSD, M1 or GBPUSD,M1 Tab will be displayed in white color).

Window 4 : Terminal (Ctrl-T)

Window to check Balance, Margin, Free Margin, Margin Level, Open Positions, Pending Orders, Transaction History (trading/deposit /withdrawal), Latest News, Alert (to notify trader while current price is approaching a certain price), Mailbox (news from Broker), Journal (trading chronology).

Please check MailBox frequently to anticipate new trading rules / news from the Broker!

Market Watch Window

is window to check Current Price (Bid/Ask), High Low, and Server Time. To subscribe for High Low prices, please click on right mouse button on Market Watch windows, then select pilih High/Low Server Time (if time is not running, means no connection or Broker Server is OFF)

Symbol	Bid	Ask	High	Low
EURUSD	1.29396	1.29426	1.29918	1.27470
GBPUSD	1.47847	1.47897	1.48425	1.45889
USDCHF	1.16169	1.16219	1.17439	1.15910
USDJPY	91.854	91.884	92.205	90.730
AUDUSD	0.67540	0.67590	0.68015	0.64756
USDCAD	1.21896	1.21966	1.25392	1.21864
NZDUSD	0.53245	0.53295	0.53635	0.51092

Double click on desired pair to make an order

Navigator Window

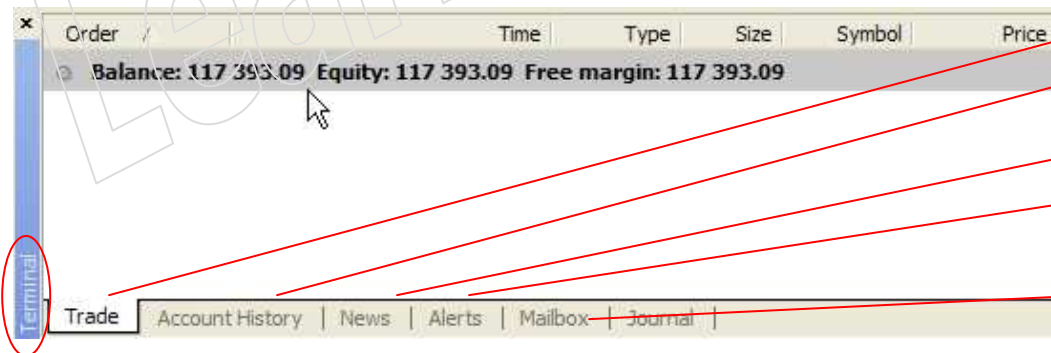
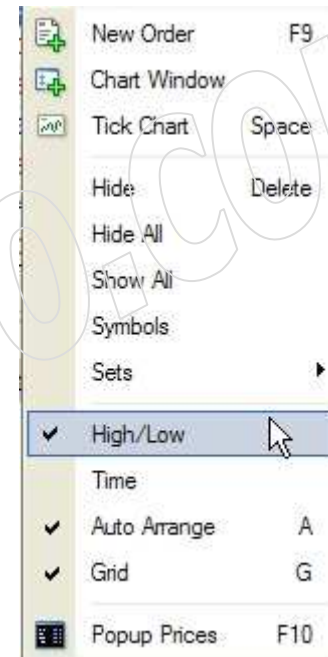
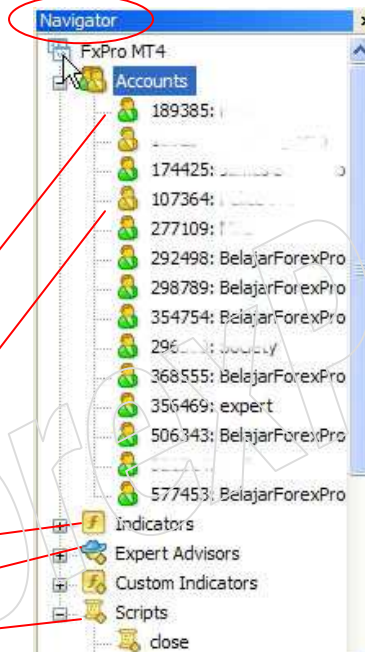
Demo Account (green)

Real Account (yellow)

Indicator List

Expert Advisor List

Script List



Terminal Window

Active Pending and Open Orders

History of Closed Position/Deposit /Withdrawal

Latest Economic News (optional)

Alert (to notify trader while current price is approaching a certain price)

Mailbox (for Broker latest news) (Important)

CHART SETTING



To change any setting related to chart can be done by :
Clicking on right mouse button

Trading :

New Order (F9) : To open order at market price (at current price)

If you click right mouse button at **higher** point than current price on the chart, Buy Stop and Sell Limit option will be shown.

If you click right mouse button at **lower** point than current price on the chart, Sell Stop dan Buy Limit option will be shown.

Expert Advisor (EA / Robot / Automated Trading) :

To change Expert Advisor properties / input setting or deactivate (remove) active EA on the chart.

Important ! not every EA can work in multiple charts and timeframes at the same time. Make sure you understand the characteristic of EA used to prevent conflict between EAs.

Indicator List (Ctrl-I) :

List of active indicators on the current chart.

Periodicity :

To change chart's time frame.

Template :

Chart and favorite indicator settings can be saved in templates and able to be loaded anytime.

Grid :

Setting to show Horizontal and Vertical grid on the chart.

Volumes :

Setting to show Trading Volume graph on the chart

Zoom In / Out :

Setting to zoom in or out price graph on the chart

Save as picture :

To save chart in graphic format (gif or bmp)

Print :

To print desired active chart

Properties :

Setting to change the color of chart's elements, to show Ask price line, or to show Open High Low Close (OHLC) information, etc

INTERNET CONNECTION STATUS (STATUS BAR)

Internet connection status can be checked by looking at lower right side of MetaTrader. It is displayed in small status bar in red and or green color :



- **No connection** (Red) means there is no connection / disconnected
- **Invalid account** (Red) means wrong login number and or password. Or account does not exist / removed.
- **Status bar with full green graph** means you are connected to DataCenter
- **Status bar with both color, green and red graph** means you are connected directly to MetaTrader Server (Ctrl-O => Server => Remove the tick at "Data Center auto configuration" to enable this setting)

Troubleshooting :



When the connection graph has shown **green red** or **full green** graph but always appears "Waiting for Update" message for *more than 10 minutes*, the problem could be caused by broker accounts are

separated into 2 types, namely, standard and micro.

To solve the update problem, please **Open New Chart** by clicking "File" Tab => New Chart or Alt-F => N. (Note : You must use **Open New Chart** instead of "File" Tab => Open Deleted!).



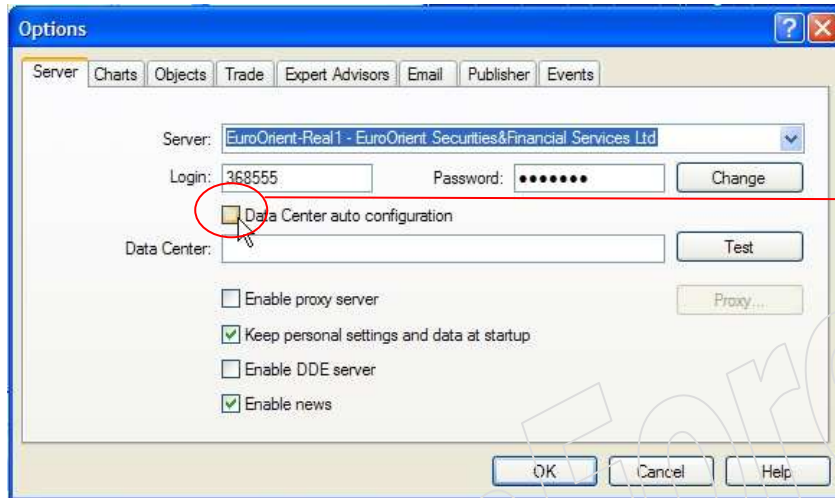
If there are only a few pairs available and your desired pair is not showing, prior to **Open New Chart**, please click on right mouse button at **Market Watch** => **Show All**.

After clicking "Open New Chart", you will notice that there is a small difference on the new pair's chart (micro account) compared to the default chart (standard). Example : GBPUSD.,M1



with the previous chart GBPUSD,M1. (There is dot sign, after GBPUSD symbol). Other example is GBPUSDm,M1. If you use micro account, you have to try opening new chart to solve the problem.

In case new chart has been opened and "Waiting for Update" is still showing or Server Time in Navigator Window is not moving, click Ctrl-O => Server => Remove the tick at "Data Center auto configuration" box until "Waiting for Update" disappears and server time is back to normal.



The best server setting to use Expert Advisor is always use direct connection to MetaTrader Server (without connecting through datacenters).

Click "Tools" Tab => Options => Server. Remove the tick on "Data Center auto configuration" box

IMPORTANT :
This setting is highly recommended to solve chart updating problem (Marked by Server time in Market Watch window is not moving). However server will automatically connect to available data centers

while there is connection problem. In case a wrong datacenter is chosen (inactive datacenter), then EA will not work and this may cause losses or Margin Call. To prevent this, frequently check Server Time in Market Watch window!

Connect to DataCenters :



To change MetaTrader Server, please click on status bar / connection graph, then select preferred server (Do not change servers if there is no problem !) MetaTrader can perform automatic search to server with smallest ping. Click **Rescan Servers** to do this.

CHANGE PASSWORD METATRADER

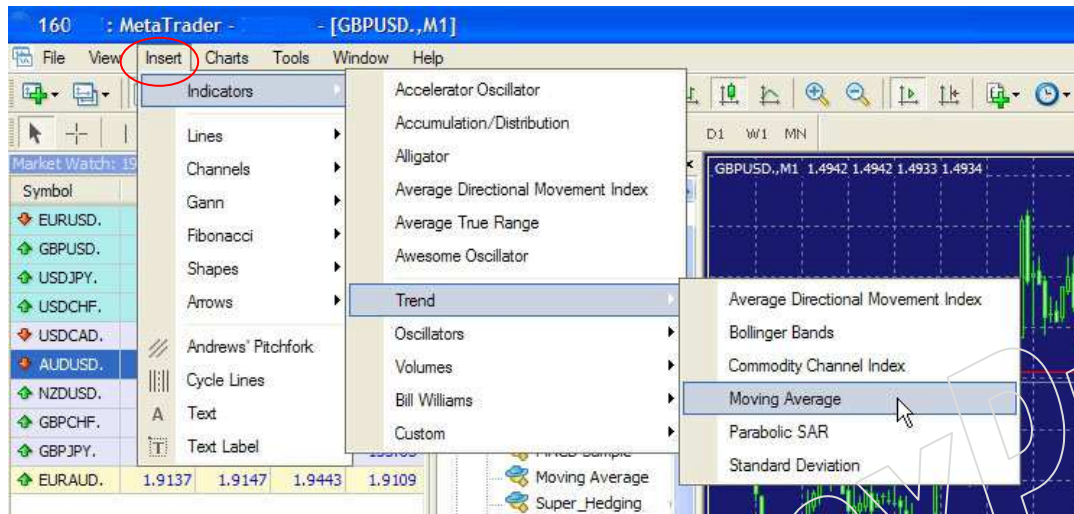
- To change MetaTrader password, click "Tools" Tab => Options or Ctrl-O
- In "Server" Tab click Change. Put a dot at Change Master Password to change master password or a dot at Change Investor (read only) password to change investor (read only) password. This password is used by your investors or to show your trading performance in real time, without the privilege to trade.
- Current Password must be filled with old password you want to change.
- New Password can be filled with new password.
- Confirm retype new password to confirm



Password must have at least **5 characters**, and a combination of at least 2 of 3 options : **Capital letters, Small letters, and Numeric**. Example : Abcde (combination of capital and small letters), abc12 (combination of small letters and numeric), ABC12 (combination of capital letters and numeric), or Abc12 (combination of capital letters, small letters, and numeric)

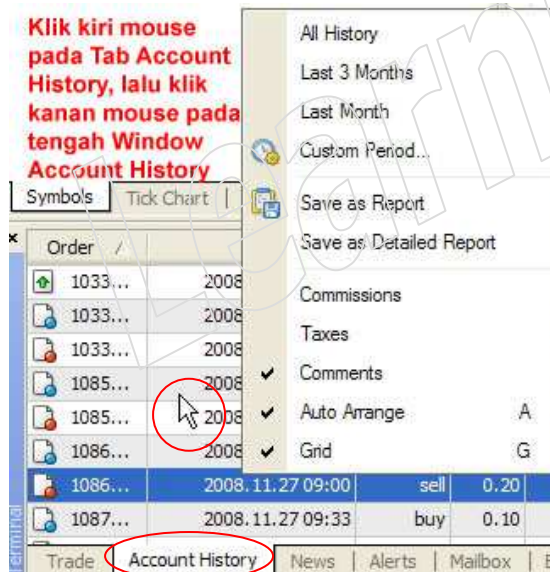
If you have successfully changed the password, a successful message will be displayed in "Terminal" Window => "Journal" Tab

ADD TECHNICAL INDICATOR



To add technical indicators, click "Insert" Tab => Indicator, Lines, Channels, etc

TRANSACTION HISTORY



Klik kiri mouse pada Tab Account History, lalu klik kanan mouse pada tengah Window Account History

Click on "Account History" Tab, put mouse cursor in the middle of Terminal Window as seen in the left figure. Click right mouse button and select the period of Trading / Deposit / Withdrawal history.

All History : To show all available transaction history

Last 3 Months : To show past 3 month's transaction history which is available in broker's server

Last Month : To show last month's transaction history which is available in broker's server

Custom Period : To show customized transaction history according to the range period set, example : today, last week, etc.

Save as Report : To save transaction history in html format

Save as Detailed Report : To save detailed transaction history in html format

Commissions : To show commission charged by broker

Taxes : To show tax charged by broker

Comments : To show comment or additional info such as stop out / so (Margin Call), Expert Advisor comments, or other important comments.

OPENING ORDERS IN METATRADER

Symbol	Bid	Ask
EURUSD	1.2826	1.2828
GBPUSD	1.4816	1.4819
USDJPY	91.31	91.33
USDCHE	1.1744	1.1747
USDCAD	1.2237	1.2241
AUDUSD	0.6674	0.6677
NZDUSD	0.5314	0.5319
GBPCHE	1.7393	1.7400
GBPJPY	135.30	135.37
EURAUD	1.9218	1.9228

Klik 2x pada pair yang diinginkan atau tekan F9 untuk melakukan Order

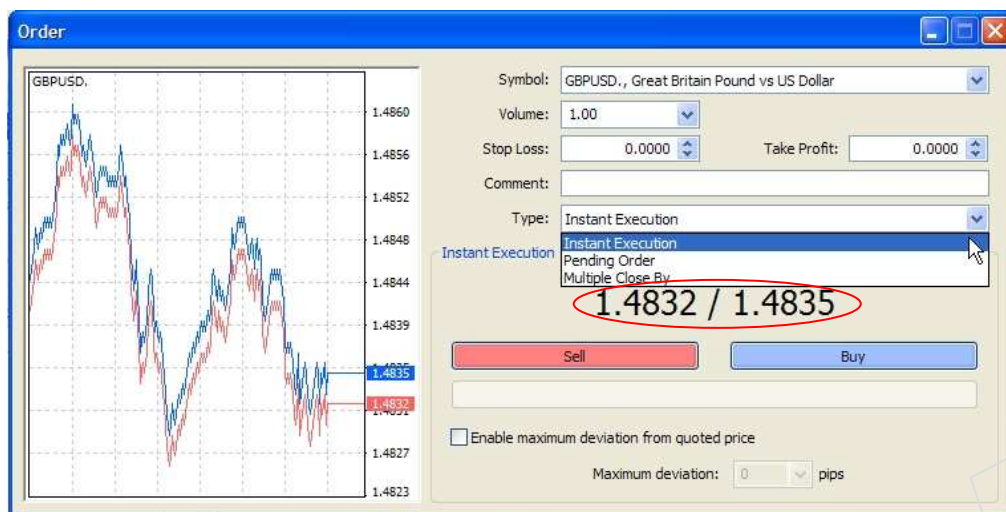
To open an order in MetaTrader please double click on desired pair in **Market Watch Window**

Default Pair can be changed prior to open an order.



Other alternative way is clicking **F9** to open an order based on active pair in active chart (please see figure on the left, GPBUSD is the active pair in chart)

Example : The current **active** chart is GBP/USD chart, then when you click **F9** , the default pair displayed is GBP/USD. However, the pair can be changed by selecting new pair in **Order Window**.



Settings in Order Window :

Symbol : Available Currency pair

Volume : Order Lot amount.
Example : 1, 10, 0.1, etc (please use period instead of comma!)

Stop Loss : Stop Loss Price
(please input Stop Loss in price instead of point / pip ! example : 1.4820)

Take Profit : Take Profit Price (please input Take Profit in price instead of point / pip ! example : 1.4875)

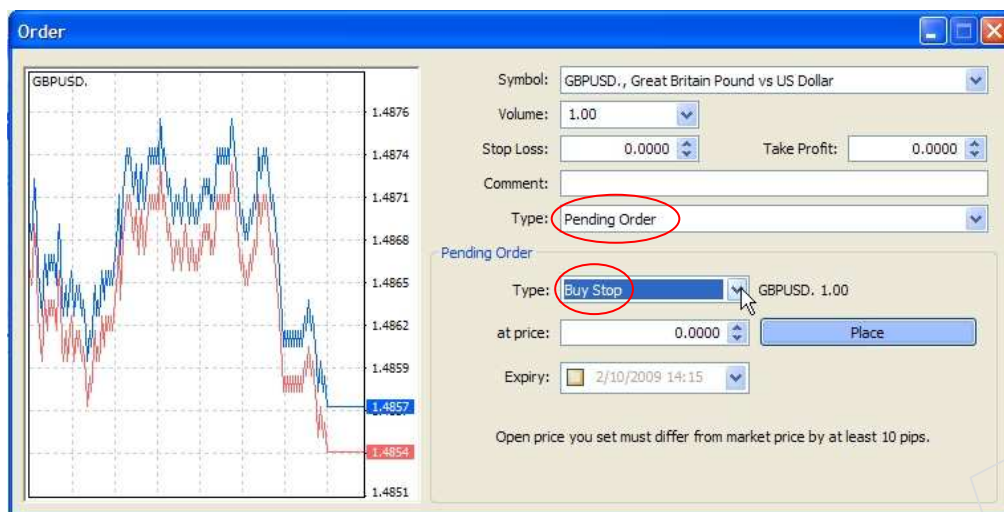
Comment : Additional comment to identify your trade (optional)

Type : Order Types, there are 2 important order types, Instant Execution and Pending Order:

Instant Execution (default) : Order at the current market price (please see the example above : Bid 1.4832 / Ask 1.4835). To allow price slippage between actual price got and ordered price please tick Enable maximum deviation from quoted price, then input maximum tolerated slippage.

Steps to open an order at market price (Instant Execution):

- 1) Double click on desired pair in "Market Watch" Window or click F9,
- 2) Fill in **Volume** field with order lot amount, please use period for decimals (ex: 0.1)
- 3) Fill in **Stop Loss** and **Take Profit** field (optional).
- 4) Select **Instant Execution** Order Type
- 5) Tick **Enable maximum deviation from quoted price** (optional)
- 6) Click **Sell** or **Buy** (Note : Buy uses Ask Price, Sell uses Bid Price).



Pending Order : Order at price other than current market price. Example : current market price is 1.4832. To order above or below 1.4832, please use Pending Order.

Order **Buy** above current Ask Price of 1.4835.
Example order Buy at 1.4850, please use Pending Order => Buy Stop

Order **Buy** below current Ask Price of 1.4835. Example order Buy at 1.4820, please use Pending Order => Buy Limit

Order **Sell** above current Bid Price of 1.4832. Example order Sell at 1.4850, please use Pending Order => Sell Limit

Order **Sell** below current Bid Price of 1.4832. Example order Sell at 1.4820, please use Pending Order => Sell Stop

At Price : Price of pending order. Example : Suppose you want to order, Buy Stop at 1.4850, please fill in 1.4850 in "at price" field.

Expire : Expiration of Pending Order (optional). If this field is filled and the date set has been elapsed even the price set has not been touched, related pending order will be cancelled.

Steps to order Pending Orders :

- 1) Double click on desired pair in **Market Watch Window** or click **F9**,
- 2) Fill in **Volume** field with order lot amount, please use period for decimals (ex: 0.1)
- 3) Fill in **Stop Loss** and **Take Profit** (optional).
- 4) Select **Pending Order Type**, Select **Stop** or **Limit Pending Order Type**
- 5) Fill in **At price** field with Pending Order price
- 6) Fill in **Expire** (optional)
- 7) Click **Place**

Important :

In case there is "Open price you set must differ from market price by at least 10 pips" message below Expiry. This kind of message is a notification to adjust Pending Order, Stop Loss, or Take Profit level at least 10 points away from current price! Invalid S/L or T/P Error message is caused by Stop Loss or Take Profit levels is too small than allowed. Every broker and every pair could have different stop levels!

Open Orders and Active Pending Orders can be seen in "Terminal" Window => "Trade" Tab.

Open Orders will be located above Balance, Equity, Margin Information row. While Active Pending Orders (Buy Stop, Buy Limit, Sell Stop, or Sell Limit) are located below Balance, Equity, Margin Information row.

Order	Time	Type	Size	Symbol	Price	S / L	T / P	Price
19795713	2009.02.10 10:44	sell	0.10	gbpusd	1.48464	1.50254	1.46964	1.48390
Balance: 117 399.79 Equity: 117 407.19 Margin: 29.69 Free margin: 117 377.50 Margin level: 395406.26%								
19795720	2009.02.10 10:44	buy stop	0.20	gbpusd	1.48724	1.46934	1.50224	1.48390

Open Order

Balance

Pending Order

You can find closed open orders or cancelled pending orders within "Terminal" Window => "Account History" Tab.

Order /	Time	Type	Size	Symbol	Price	S / L	T / P	Time	Price
1979...	2009.02.10 10:31	buy stop	0.20	gbpusd	1.48951	1.47183	1.50451	2009.02.10 10:32	1.48676
1979...	2009.02.10 10:44	sell	0.10	gbpusd	1.48464	1.50254	1.46964	2009.02.10 10:49	1.48230
1979...	2009.02.10 10:44	buy stop	0.20	gbpusd	1.48724	1.46934	1.50224	2009.02.10 10:49	1.48230

Profit/Loss: 17 423.19 Credit: 0.00 Deposit: 100 000.00 Withdrawal: 0.00

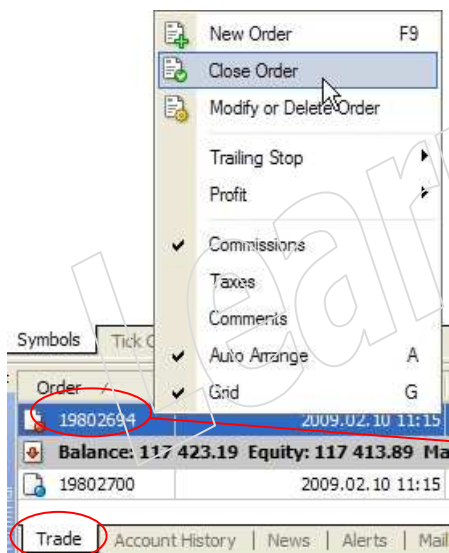
Trade **Account History** News Alerts Mailbox Experts Journal

Profit / Loss is the total profit / loss occurs within the period you set in **Account History** setting

On above figure, Sell order GBP/USD 0.1 lot was opened at 1.48464 on 10.44 server time and closed at 1.4823 on 10.49 server time at the same date, 10 February 2009

Volume (lot) calculation, Order Types (Buy Stop, Sell Stop, Buy Limit and Sell Limit), Stop Loss, Take Profit, Trailing Stop, Margin, Margin Call explanation and other forex basic tutorial can be found at <http://www.learnforexpro.com/forextutorial> (PDF format) (Highly recommended for beginners!)

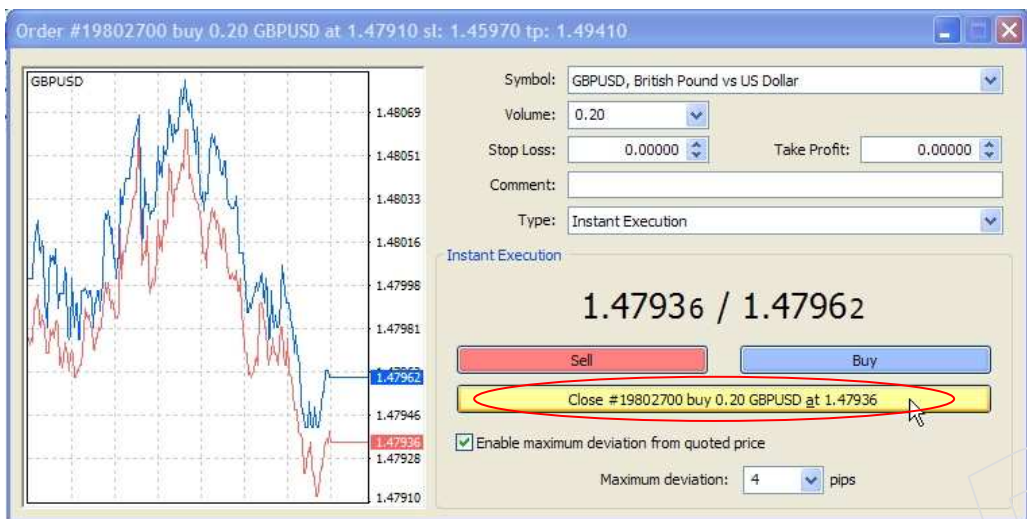
CLOSING OR MODIFYING ORDERS IN METATRADER



Close Open Order :

Click "Trade" Tab within "Terminal" Window, click right mouse button on the order you intend to close, select **Close Order**.

Click at right mouse button on the open order



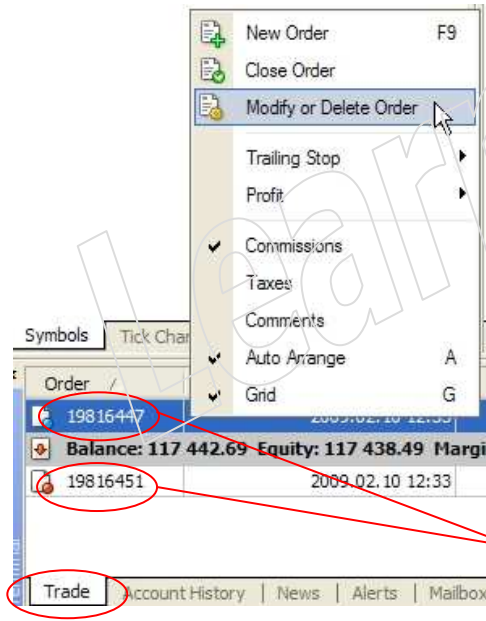
After clicking right mouse button, **Order Window** will appear, click **Close (yellow)** button to close the open order.

If the price is moving fast during closing process and the price has been changed, **requote** confirmation will appear. This means you have to confirm to close the position at the new price or cancel the closing process.

price is moving fast, please tick **Enable maximum deviation from quoted price**. Please set tolerated price deviation in pips.

To reduce requotes while the market

Edit Open Order Stop Loss / Take Profit:



Click **"Trade" Tab** within **"Terminal" Window**, click right mouse button on the order you intend to close, select **Modify or Delete Order**.

Note ! You can not change lot size or open price of orders that have been opened. You may only edit Stop Loss / Take Profit levels!

Click right mouse button on order to edit



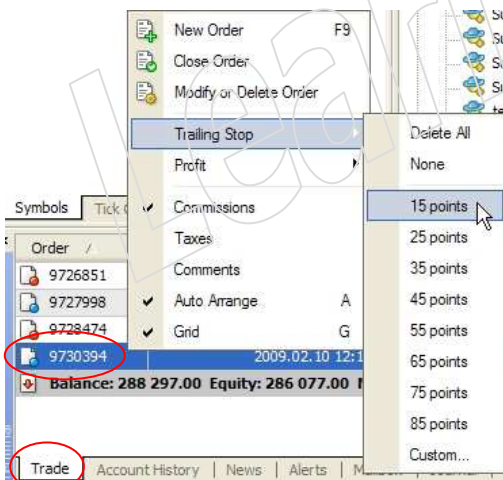
After clicking right mouse button, **Order Window** will appear, change Stop Loss and or Take Profit if needed, click on **Modify (red)**.

In the figure above you can see warning message :

Stop Loss or Take Profit you set must differ from market price by at least 50 pips.

Usually it is very uncommon for a broker to set minimum limit of 50 pips away from market price, hence you should check if the broker has 1 additional digit. In case the broker uses 5 decimal digits (fractional), 50 pips are equal to 5 pips in normal 4 digits broker.

Illustration : Buy at 1.50000 then for TP 50 points you must add 500 or at 1.50500. Tip to easily calculate TP and SL level is by filling "**Level**" pull down menu. To set 50 points, simply fill in 50 (or 500 in 5 digits platform). Click **Copy as**, then click **Modify (red)**.



Activate Trailing Stop function on Open Order:

Click "**Trade**" Tab, click right mouse button on specific **Open Order** you intend to set, select **Trailing Stop**, choose how many pips profit to start Trailing Stop function. (Ex : 15 points mean Trailing Stop will start only when the profit is 15 points or more)

To add customized Trailing Stop level, click **Custom** to set your preferred level.

Note ! Trailing Stop feature will be active only if computer and internet connection is turned on.

Setting Profit/Loss Unit

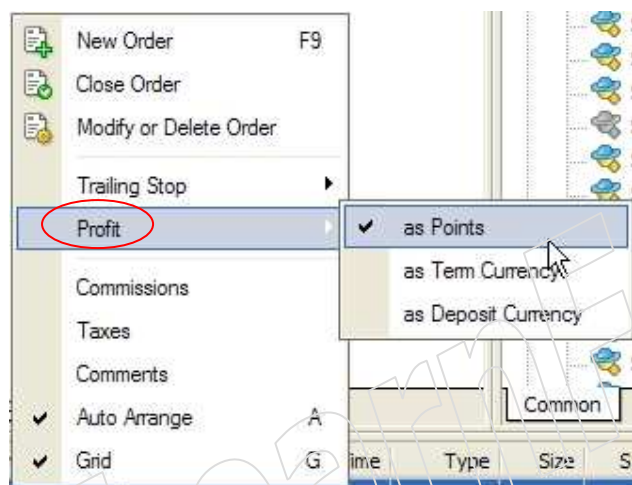
Order	Time	Type	Size	Symbol	Price	S/L	T/P	Price	Swap	Profit
19879110	2009.02.10 18:48	sell	0.10	gbpusd	1.45952	1.47742	1.44452	1.45852	0.00	100
Balance: 117 506.69 Equity: 117 516.69 Margin: 29.19 Free margin: 117 487.50 Margin level: 402586.78%										10.00
19882203	2009.02.10 19:05	buy stop	0.20	gbpusd	1.46212	1.44422	1.47712	1.45852		

Terminal

Trade | Account History | News | Alerts | Mailbox | Experts | Journal

Total Profit/Loss of current active open orders (\$)

Click right mouse button at "Terminal" Window => "Trade" Tab.
A window will appear, select Profit.

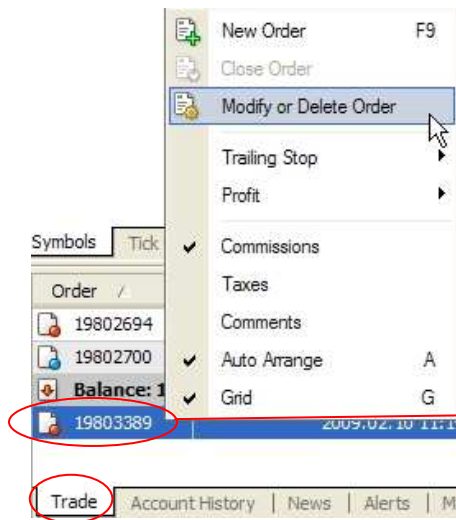


As Points : To display profit in points.

As Term Currency : To display profit in Currency unit (ex : in dollar)

As Deposit Currency : To display profit in Currency unit (ex : in dollar)

Delete or Edit active Pending Order :



Click "Trade" Tab in "Terminal" Window, click right mouse button on pending order you intend to edit or delete.

Click right mouse button on pending order



Delete Pending Order :

After clicking right mouse button, Order Window will appear, click Delete (yellow).

To edit Pending Order, please skip this step and continue to Edit Pending Order steps below



Edit Pending Order :

After clicking right mouse button, **Order Window** will appear, change the **Price** as desired.

You may also change **Stop Loss / Take Profit levels** as well, then click **Modify (Red)**.

IMPORTANT :

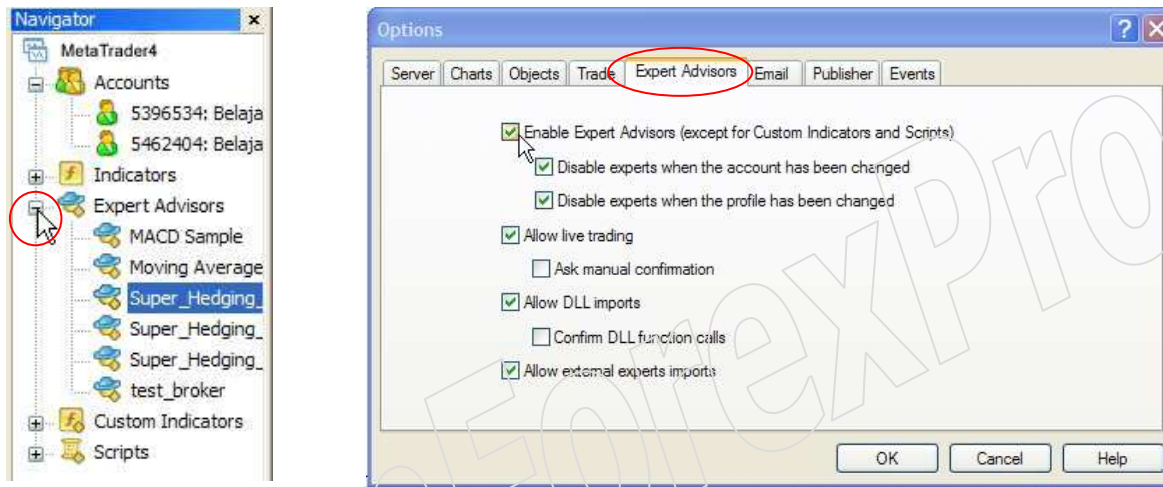
Take Profit, Stop Loss, and Pending Order information are saved in Broker's server. They will not be affected by internet connection instability and still in active state eventhough your computer is not turned on or not connected to the internet.

In contrary, **Trailing Stop** function is manually run by client's MetaTrader in your local computer. When your computer is not connected to the broker's MetaTrader server, Trailing Stop function will not be active. To prevent this, you must use Stop Loss as a backup.

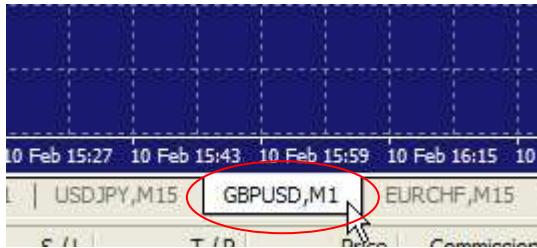
EXPERT ADVISOR INSTALLATION GUIDE

Trader that uses automated trading Expert Advisor (Forex Robot) such as Super Hedging EA, for example : <http://www.learnforexpro.com/expertadvisor.php>, please do the following steps :

- Copy Expert Advisor file (example : super_hedging.ex4) to folder C:\Program Files\MetaTrader4\experts (folder with red color, does not have to be MetaTrader4, as this depends on Forex Broker you use)
- In case MetaTrader software is still running, please close then re-open MetaTrader to update the list of available Expert Advisor (EA)

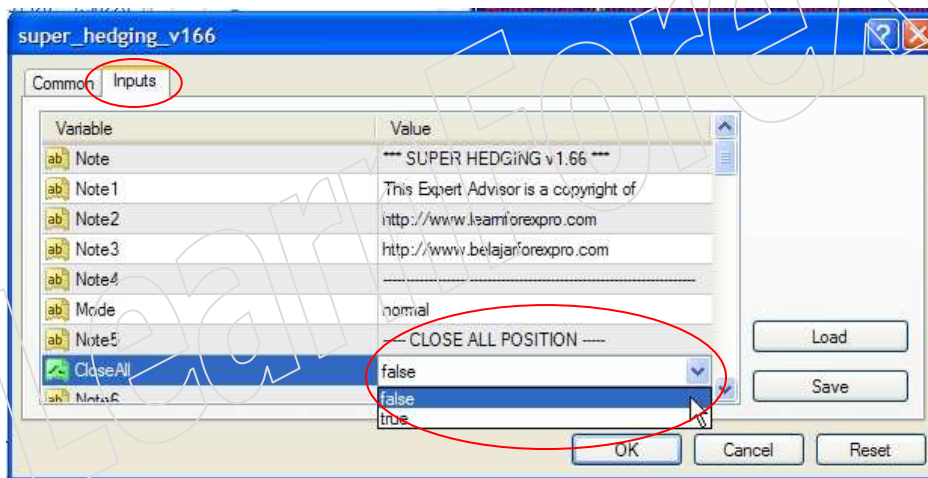


- Click "Navigator" Tab, click [+] Expert Advisor to see all available Expert Advisors. If you have correctly copied super_hedging.ex4 file to "experts" folder, super_hedging EA with grey color should appear in the Expert Advisor's List. If the EA does not appear, you must double check the target folder you used to put the EA. Copy the EA file to the correct folder. Close MetaTrader and reopen once again.
- Click Ctrl-O => Expert Advisors Tab and tick Expert Advisor options as the figure above. Click OK
- To run Expert Advisor in a specific pair and timeframe, please highlight desired chart, in this example is GBPUSD, M1 chart.



Active Chart will be shown by white colored Pair Tab as seen on the left figure

- Double click Expert Advisor or drag EA to run EA on active chart. Remember that you should not activate EA on multiple chart at the same time, unless you fully understand that the EA can run without conflicting each other.
- Expert Advisor parameter window will appear (The window will display Expert Advisor's name). Click **Inputs Tab** to change Expert Advisor's input setting, double click on the setting you want to change, click **OK** to run EA

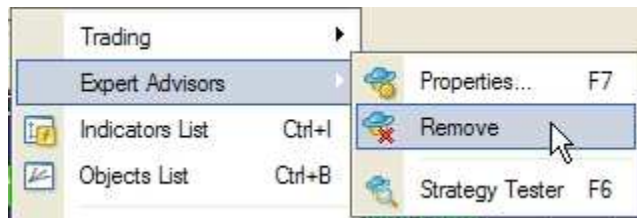


Load : To load saved personal Expert Advisor setting. Example : a trader can save personal EA setting for a specific news or condition, lets say personal setting for News Non Farm Payroll, etc

Save : To save personal Expert Advisor setting

Once EA has been activated, smiley icon ☺ will appear on the upper right of the chart. If you do not tick the correct options in "Expert Advisor" Tab a morose icon ☹ will appear. Inactive Expert Advisor Button at the upper side of MetaTrader will cause ✖ sign.

To solve both problems above, please click right mouse button on the chart, select Expert Advisors => Remove.



Double check Expert Advisor options by clicking Ctrl-O => "Expert Advisor" Tab

Double click Expert Advisor or drag EA back to chart to reactivate EA.

INSTALLING MULTIPLE METATRADERS

You can install more than 1 MetaTrader at the same PC. This method is generally used by traders who have more than 1 account to run EA in different pairs, timeframes, strategies, or simply to split the risk to avoid margin call wiping out all fund in the same account.

Steps to install more than one MetaTrader at the same PC :

- 1) Repeat MetaTrader installation procedure described in page 2, namely double click on MetaTrader setup file. Follow the next steps until folder creation step



- 2) Name a different **MetaTrader Folder** for the second MetaTrader. For example : First MetaTrader folder is **C:\Program Files\MetaTrader4**, then make a different folder such as **C:\Program Files\MetaTrader-FCM**
- 3) Name a different **Program Group** for the second MetaTrader. For example : First MetaTrader folder is **MetaTrader 4**, then make a different Program Group such as **MetaTrader FCM**

TUTORIAL AND FOREX GUIDE

- ➔ **Sign Up Live Forex Account (Free)** : <http://www.learnforexpro.com/broker.php>
- ➔ **Basic Forex Trading Tutorial** : <http://www.learnforexpro.com/forextutorial> (PDF)
- ➔ **MetaTrader Tutorial** : <http://www.learnforexpro.com/metatrader/tutorial> (PDF)
- ➔ **Start Trading Forex in MetaTrader** : <http://www.learnforexpro.com/tradeforex> (PDF)
- ➔ **VPS Installation Tutorial** : <http://www.learnforexpro.com/vps> (PDF)

- Liberty Reserve Registration Guide : <http://www.learnforexpro.com/libertyreserve> (PDF)
- Automated Trading with Forex Robot to earn money continuously while you are sleeping, in vacation, etc. <http://www.learnforexpro.com/expertadvisor.php>
- Download PDF Reader to read PDF format : <http://get.adobe.com/reader/>

RECOMMENDED PARTNERS

- BelajarForexPro.com : Belajar Forex (Valas) Trading (Indonesian) <http://www.belajarforexpro.com>
- FCMarket.com : Reliable Forex (Valas) Broker <http://www.fcmarket.com>
- ProChanger.com : Trusted, Cheap, and Fast E-Currency Exchanger <http://www.prochanger.com>

Please address questions or advices to : support@learnforexpro.com

--GOOD LUCK IN YOUR TRADING--